



Decision Tables

appRules Decision Tables

Decision tables play a major role in composing powerful business rules projects in appRules. appRules decision tables present a better alternative to coding complex decision processes or performing expensive database/service queries. appRules decision tables have been designed to take advantage of the facilities available in appRules Studio. They can be configured in appRules Studio, Visual Studio or exported and imported as delimited files.

Configurable Conditions and Actions

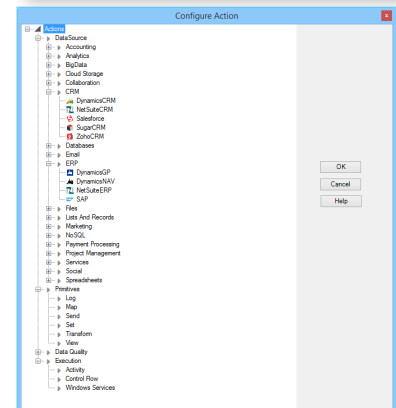
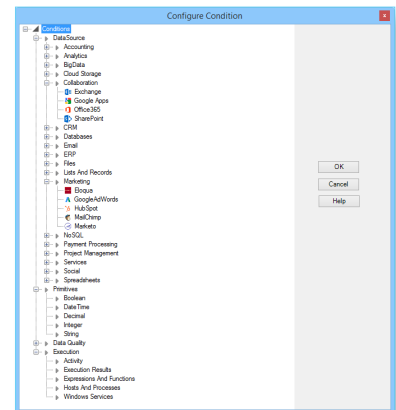
At the atomic level, activities in appRules derive from conditions and actions. As in most decision tables, appRules decision rows are made up of conditions and corresponding actions.

Condition Configurator

The Condition Configurator is used for adding conditions to decision tables, rulesets and other activities in appRules. Conditions are grouped according to their category in the condition tree.

Action Configurator

The Action Configurator is used for adding actions to decision tables, rulesets and other activities in appRules. Actions are grouped according to their category in the action tree.



	New Customer	Product Category	Sale Amount	Number Of Prior Orders	Discount Percent	Free Shipping
1	<input type="checkbox"/>	Condiments	amount: > \$5,000	orders: > 50	10%	<input checked="" type="checkbox"/>
2	<input checked="" type="checkbox"/>	Beverages	amount: \$1,000 to \$5,000	orders: < 10	1%	<input type="checkbox"/>
3	<input type="checkbox"/>	Meat/Poultry	amount: \$1,000 to \$5,000	orders: 10 to 50	2%	<input checked="" type="checkbox"/>
4	<input checked="" type="checkbox"/>	Meat/Poultry	amount: > \$5,000	orders: > 50	10%	<input checked="" type="checkbox"/>
5	<input checked="" type="checkbox"/>	Seafood	amount: \$1,000 to \$5,000	orders: < 10	1%	<input type="checkbox"/>
6	<input type="checkbox"/>	Confection	amount: < \$1,000	orders: > 50	3%	<input checked="" type="checkbox"/>
7	<input type="checkbox"/>	Seafood	amount: > \$5,000	orders: 10 to 50	1%	<input type="checkbox"/>
8	<input type="checkbox"/>	Confection	amount: > \$5,000	orders: > 50	5%	<input checked="" type="checkbox"/>
9	<input checked="" type="checkbox"/>	Beverages	amount: < \$1,000	orders: < 10	1%	<input type="checkbox"/>
10	<input type="checkbox"/>	Meat/Poultry	amount: < \$1,000	orders: 10 to 50	2%	<input type="checkbox"/>
11	<input checked="" type="checkbox"/>	Beverages	amount: > \$5,000	orders: 10 to 50	5%	<input checked="" type="checkbox"/>



appRULES®

Integration • Business Rules • Process Automation

Drill-Down and Configure

When a condition or action category is selected, the available options are displayed in the condition or action tree. Upon final selection, the Configuration window is displayed for the condition or action:

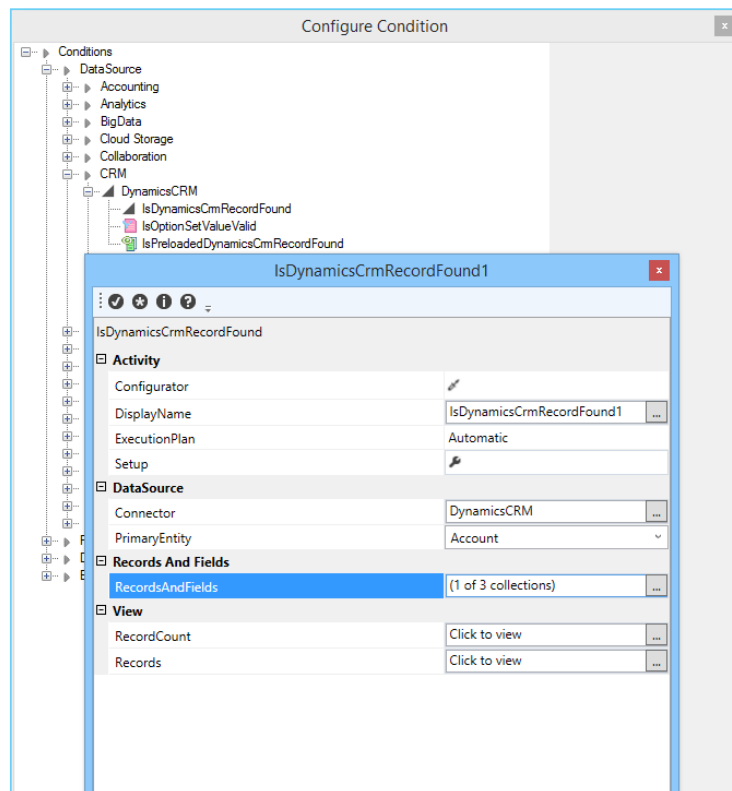
Context-Aware Navigation

appRules decision tables are fully context aware. To add a new condition or action, right-mouse click at the desired location and the appropriate menu will be displayed. To move a row or column, drag it to the new location.

Auto-Iteration

In addition to executing the decision table through standard methods, appRules decision tables can be optionally configured for automatic iteration. Some automatic iteration examples include:

- Automatically process the decision table for all states in the country
 - Automatically process the decision table for all new leads in Salesforce or Dynamics CRM
 - Iterate the decision table using a numeric counter
 - Process the decision table by iterating a picklist in Salesforce or OptionSet in Dynamics CRM
 - Iterate the decision table using the records in a SQL query result set
- Automatic iteration allows users to utilize the decision tables for real-world jobs without having to set up extensive looping mechanisms to do so.



Built On Windows Workflow Foundation

appRules has been built on top of Windows Workflow Foundation which offers high performance and scalability features. The decision tables leverage WF features to deliver fast execution.

Initialization Templates

During initialization of conditions and actions, template values can be utilized to generate the expressions or configuration values. This feature eliminates the data entry required for creating conditions and actions for appRules decision tables. Picklists and other list values can be utilized as template values.





appRULES®

Integration • Business Rules • Process Automation

Connectivity

appRules Decision Tables include built-in connectivity to a wide variety of data sources and platforms. Direct connection is provided for accounting, CRM, ERP, database, marketing and other applications.

Deployment Options

Decision table projects can be scheduled or deployed to run locally on the desktop or departmental server computer. Projects can also be published to run in the cloud on Microsoft Azure or Amazon EC2. Published projects can be accessed via web services.

appRULES®
Integration • Business Rules • Process Automation

For additional information or to evaluate appRules Decision Tables, please contact appStrategy at www.appstrategy.com